



New Office in Macau –

Newtech's Answer to Rising Greater Bay Area Customer Leads

For decades Newtech has been one of the market leaders in E&M systems and IT infrastructure for data centers and critical environment, providing consultancy, design, implementation, project, system and facility management.

Today, the Greater Bay Area is an innovative hub which in turn triggers the exponential expansion of the IT and data infrastructure market in Hong Kong, Macau, and Guangdong Province.

Riding on the increasing demand for multi-geographic networks, Newtech opened the first office in Macau in April 2020. We aim at delivering peace of mind solutions to critical environment management for the long-term development of this emerging market.



Project Updates

Critical Environment Enhancement for MTR Hong Kong and Macau

Newtech has been appointed as Hong Kong MTR's data center enhancement service provider over the years. In 2010, we were appointed to upgrade their headquarter data center by installing UPS and adopting the iNAV DCIM system. Further on, we provided data center enhancement for their disaster recovery site in Tsuen Wan in 2014, with cost-effective built-to-suit solutions.

In 2019, we were nominated as the depot computer room modification service provider for their subsidiary in Macau, by providing peace of mind data center design and build services.

Newtech's proprietary iNAV DCIM solution ensures customers like MTR to monitor the data center efficiently with one click. Recently, we installed UPS, PMP, and advanced iNAV DCIM system for the MTR Tsuen Wan site. Operators can monitor equipment on a real-time basis for both headquarter and the Tsuen Wan site over the same portal.



Leading Chinese Commercial Bank Deploys Robust Data Center Solution for Hong Kong and Macau Branches

Newtech's team of professional engineers and specialists have been providing turnkey data center infrastructure solution for a leading Chinese commercial bank during the past 9 years.

In 2012, Newtech was appointed to provide data center design and build service for their Macau branch. Upon customer satisfaction, we delivered a built-to-suit solution for their Macau disaster recovery site in 2016.

We were also nominated as their Hong Kong data centers building contractor in 2013, 2015, and 2017. The projects cover a total building area of over 60,000 sq.ft with over 1,300 racks.

Newtech has designed and constructed the new generation of digitalized data centers for Hong Kong and Macau customers all along the line.



Remote Data Center Monitoring for a Multi-national Technology Giant during Pandemic

Recently, Newtech delivered a data center turnkey solution for a multi-national technology giant within 6 months. In face of the pandemic, all change management is logged in a remote monitor system. Customer can monitor, comment, and approve all jobs through this interactive interface.

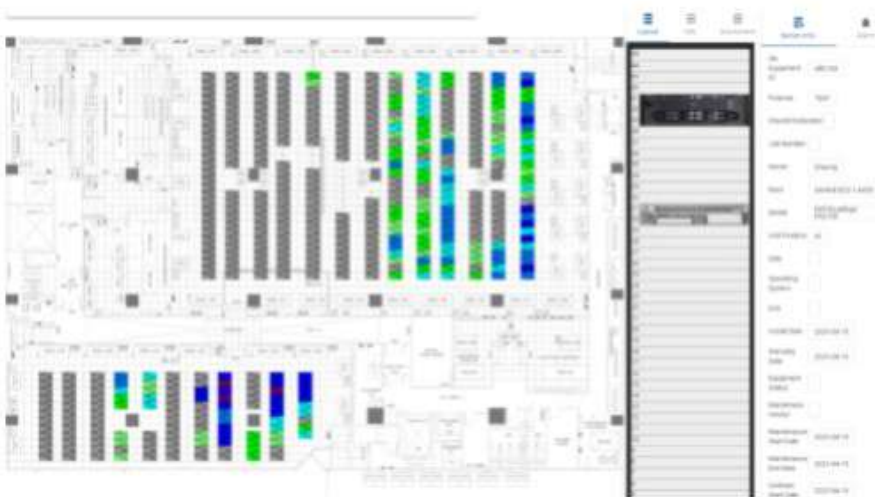
This project included the installation of high-density 10kVA racks. To increase energy and cooling efficiency, Newtech replaced raised floor with the CRAC corridor. As such, our specialists installed hot aisle containments for the air-conditioning and ventilation system. This provides more space for equipment and allows a significant reduction in the operation cost.



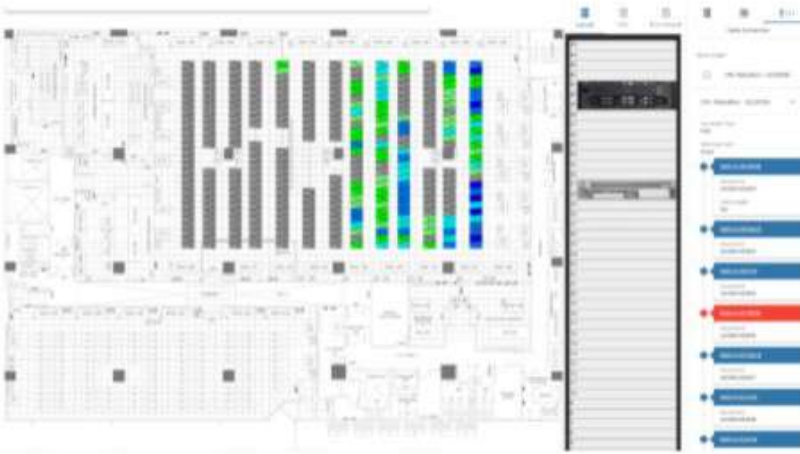
Introducing Upgraded Features of iNAV DCIM

Based on the iNAV DCIM solution architecture, Newtech is rolling out the advanced features in this proprietary solution. What are the new cutting-edge elements?

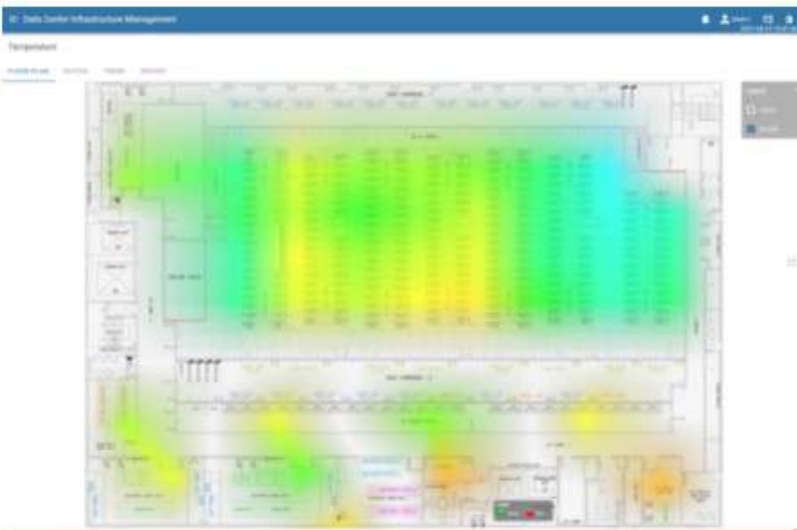
- **Newly added voice call and telegram alert notifications**
- **Hypertext Transfer Protocol Secure (HTTPS) and Two-factor Authentication (2FA) are installed for security enhancement**
- **Monitors rack temperature, controls rack lock, and reboots power socket through the intelligent power bar**
- **Allows multiple users and clients to manage data center assets through the portal**



- Oversees the status of the cable network



- Provides temperature profile of data center and IT equipment indications



Newtech's Strategic Partner-RC IT Cooling Got an Official Website New Look

Newtech has been working closely with RC IT cooling on significant projects, including Union Bank of Switzerland, Hong Kong Monetary Authority, Global Switch, and the Chinese University of Hong Kong.

<https://www.rcgroupasia.com/> was officially revamped in February 2021. You can have a quick overview of RC company credentials, cooling products, and remarkable projects through the brand new interactive layout.



Upcoming Events

Data Center World Singapore 2021

Data Center World is back on 20-21 October at Singapore Marina Bay Sands! This year, you can explore the new features in our upgraded iNAV DCIM solution and get a deep dive into the other key components for Data Center Infrastructure Management with our specialists.

Unveil the best practices and future thinking in data center innovations at our booth #H16, and witness the accelerating growth of the data center industry.

Register now: <https://www.datacentreworldasia.com/>



Corporate Social Responsibility

Partnership for Educational Excellence from The Education University of Hong Kong

Newtech, a subsidiary of the Legan Group, supports the Program of Leadership Enhancement for Serving Principals from the Education University by sharing our business model and leadership knowledge with principals and vice-principals through seminars.

Legan Group Executive Director, Mr. Julian Wong was honored to meet the principals and receive the Partnership for Educational Excellence Award on behalf of the Group in March 2021.



Contact Us

Tel: (852) 2993 5816

Fax: (852) 2993 5916

Email: info@newtechapac.com

Website: www.newtechapac.com

Address: 15/F Enterprise Square Two, 3 Sheung Yuef Road, Kowloon Bay, Kowloon, Hong Kong

