

Newtech Newsletter

2019 Vol.1

Cover Story

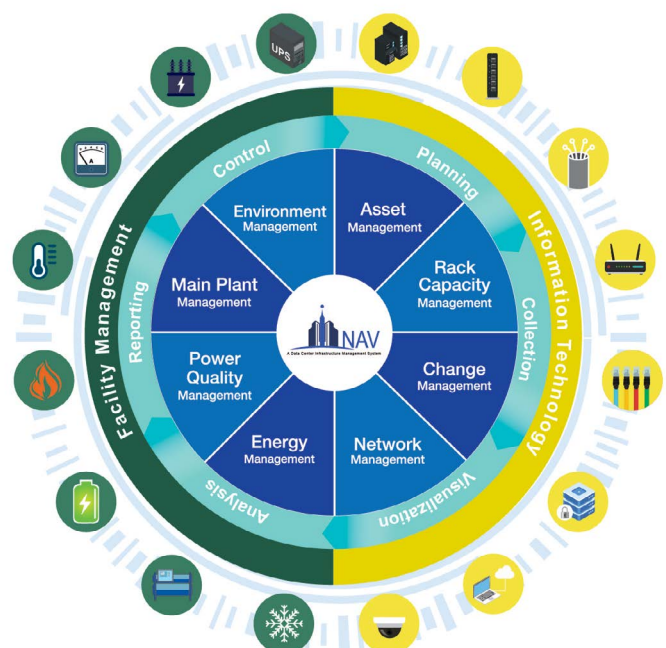
iNAV DCIM Solution- Meet Today's Challenge for Your Imperative Data Center Infrastructure

Newtech's proprietary iNAV DCIM solution is an integrated software application to oversee both IT and physical infrastructure in a unified approach. This intelligent solution specializes in providing flexible platforms, automatic reporting systems and effective communication channels with 3D visualization of assets, facilities, and the environment.

Eight Modules in iNAV DCIM

The eight modules work together seamlessly to support the required equipment provisioning, resources optimization, asset remediation, and workflow documentation of the data center.

The combination of modules can be customized according to individual company's need. iNAV is compatible with third-party software and advanced components, ensuring a smooth transfer of data during the integration process.



Product Updates

Fingerprint Server Cabinet Lock

RT-03Z Fingerprint Server Cabinet Lock brings you a new level of physical security for data centers. Safeguarding your IT assets by exerting real-time control, providing comprehensive security, and enabling audit trail, RT-03Z ensures safety down to every individual cabinet.

For more product information, please visit: <https://bit.ly/2WH1jdw>

Key Capabilities

Easy Management

- Access via fingerprint or remote trigger

Comprehensive Security

- Protects server from malicious or accidental tampering
- Allows exclusively registered fingerprints for access

Indisputable Recognition Time

- Provides a real-time audit trail of access, tracks, and reports

Cost-effective

- Saves the cost of compliance control and security



iNAV Connector- Interactive Voice Response System

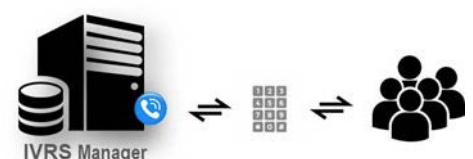
Interactive Voice Response System (IVRS) contains numerous sensors and alarms for the high level of data center monitoring. It is a real-time and automated synchronization between iNAV DCIM and IVRS Manager.

IVRS is a simple architecture consisting of software applications, database, and telephony equipments. It provides prerecorded voice responses, keypad signal logic, voice input record, and alarm signals delivery.

Contact our specialist for more information: info@newtechapac.com

Key Features

- Instant message acknowledgment
- Programmable routing for voice alarms delivery
- Hunting line algorithm on dial out
- Interface for receiving alarms in SNMP traps, SMTP emails, or SMS messages
- Timestamped call log



Technical Updates

Evolving Digitalized Trend of Data Centers

Today, there is an ever-growing urge for organizations to deliver upon customer requirements, drive innovation and increase operational efficiencies.

Well-known companies enjoy huge success in embracing digital processing. As of consumers, they have become accustomed to on-demand, cloud-based, and real-time solutions.

Advantages of Adopting Digital Transformation

- Enhances consistent high-speed data delivery
- Supports diverse workload requirements and multi-cloud integration
- Enables businesses to reduce operational overhead
- Eliminates inefficiency and detects risk behaviors

Upcoming Challenges

Companies and firms need to eliminate the manual process in order to rapidly capture new opportunities. Technologies such as 5G, IoT, VR/AR, blockchain, and AI will continue to significantly impact data center revolution towards digital transformation.



Newtech Website Revamp

<http://www.newtechapac.com/> was officially revamped in May 2019. The brand new website layout with clear categorization provides visitors a quick yet comprehensive overview of Newtech's turnkey solutions, featured products, and technical updates.



Event Highlights

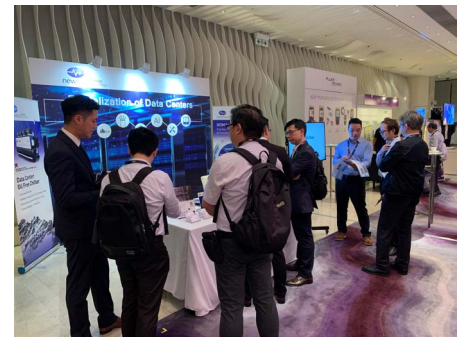
Newtech has participated in pre-eminent international events to showcase our state-of-the-art solutions to industry pioneers and elites.

Hong Kong

Newtech in DCD Converged Hong Kong 2018

It was our great honor to introduce Newtech's turnkey solutions for data centers digitalization and our iNAV DCIM with all guests on 15th November 2018 at the Mira Hong Kong.

Our Founder and CEO, Charles Lee shared his insights on the past experience and future trends of data infrastructure evolution in the panel discussion.



Newtech Returned in Data Centre World Hong Kong 2019

Newtech was delighted to present our latest iNAV DCIM solution in Data Centre World Hong Kong during the 22nd-23rd of May at the HKCEC.

Our Senior Facility Manager Chris Wong gave a speech on the topic of "Evolution of DCIM", highlighting the flexibility, capability of integration, and AI incorporation in iNAV DCIM solution.



Singapore

Newtech Featured in APAC Datacenter Convention 2018

We took part in the APAC Datacenter Convention 2018, which was held on 3rd July 2018 at Marina Bay Sands, Singapore.

Our Founder and CEO, Charles Lee gave a speech on the topic of “Refreshing Ageing Data Centers in the Asia Pacific”, illustrating how to refresh an old DC to ensure longevity and keep it cost-effective.



An Enjoyable Evening-Newtech Elite Networking Night

The captioned event took place on 12th September 2018, concluding DCD Singapore on a happy note. It was a fruitful night of having meaningful conversations with our clients and partners.



Upcoming Events

Cloud and Datacenter Convention Singapore 2019

Join Newtech on 11th July at Cloud and Datacenter Convention 2019, an all-inclusive event where end-users, system integrators, and IT professionals meet at Sands Expo Convention Center!

Unveil the best practices and future thinking in data center innovations and get insights from Newtech featured speaking session. See you all in Singapore!

Register now: <https://wmedia.typeform.com/to/CrR3VW>

11 JULY

CLOUD & DATACENTER CONVENTION SINGAPORE 2019

1000+ PROFESSIONALS
30+ Expert Speakers | 30+ Technology Showcase

SINGAPORE | SANDS EXPO AND CONVENTION CENTRE

A promotional graphic for the Cloud & Datacenter Convention Singapore 2019. It features a calendar icon for July 11th and the event title. Below, it highlights '1000+ PROFESSIONALS', '30+ Expert Speakers', and '30+ Technology Showcase'. The background shows the Sands Expo and Convention Centre in Singapore.

Project Updates

A Step Forward: OneAsia Nantong Data Center

As the main contractor of OneAsia Nantong Data Center Park, Newtech made sure the construction progress is in full swing. This flagship data center park contains about 20,000 racks, which covers about 320,000m². Phase 2 is targeted to be completed in July 2019.

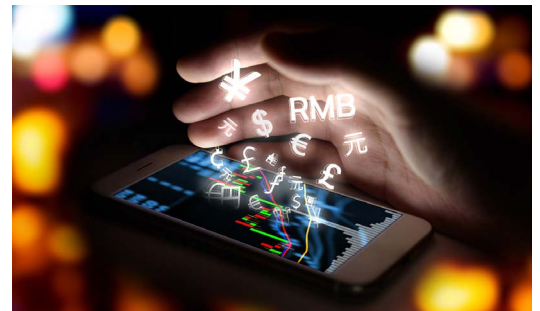


Leading Chinese Commercial Bank Expanding Data Centers in Hong Kong

Newtech has designed and enlarged two existing online data centers for a leading Chinese commercial bank. It is one of the three note-issuing banks and a mainstream banking group in Hong Kong.

Expansion works include cage setting, power distribution, and chilled water CRAC units installation. This site is equipped with two sets of Riello 400 kVA UPS to support 2N configuration in the power system.

Riding on the existing data center building experience, Newtech fully mastered all the technical requirements. Even with the rush time schedule, Newtech managed to complete both sites in less than one month and three months respectively.



Top-ranking University Upgrading Central Data Center with High Density Rack System

Newtech was appointed by one of the top public research universities in Hong Kong and Asia as its main contractor for online Central Data Center expansion. It is the only university offering college experience in an over 100-hectare campus.

The site is a low and high density combined rack system hall with maximum 21kVA per rack. We placed Riello Multi Power Modular UPS, Chilled Water Coolside CRAC System and Riello Central Traditional UPS System to support this combined hall. Modular UPS is scalable for rack system hall further upgrade. Besides, Newtech's proprietary iNAV DCIM solution was adopted to oversee both IT and facility management.



Corporate Social Responsibility

Leadership Enhancement for Serving Principles of EdUHK

Newtech, a subsidiary of the Legan Group, receives the Partnership for Educational Excellence Award from The Education University of Hong Kong (EdUHK) as recognition for its continual effort in the Program of Leadership Enhancement for Serving Principals.

This program aims at enabling principals/vice-principals to acquire a global perspective of leadership beyond the school context through seminars given by experienced leaders in various industries.



Outstanding Corporate Citizenship Awards by the HKPC

Newtech is honored to receive the 9th Hong Kong Outstanding Corporate Citizenship Award from the Hong Kong Productivity Council (HKPC) and the Committee on the Promotion of Civic Education (CPCE). Newtech pledges to continue to engage in corporate social responsibilities in multiple facets.



Newtech Cheered for Uniform Run 2019

The Uniform Run 2019 is a fundraising charity event co-organized by Legan Foundation and SportsRoad. The Newtech team participated in the 4km and 10km race on 3rd February 2019 in Pak Shek Kok Waterland Park. Our Sales Associate Director Isa Fong was honored to be one of the prize presentation guests.



Recognition of Sustainable Community Contribution by TWGHs

Newtech is recognized for its service of sustainable community contributions by providing on-job training opportunities. TWGHs Corporate Partnership Recognition Ceremony nominates different corporations in various industries for their remarkable engagement in volunteer and social services partnership.



Caring Company from the Hong Kong Council of Social Service

This is the 13th consecutive year for Newtech to receive the Hong Kong Council of Social Service's recognition in the Caring Company Scheme.

Newtech will continue to carry out corporate social responsibility by connecting our employees and the community to create a sustainable environment.



Contact Us

Tel: (852) 2993 5816

Fax: (852) 2993 5916

Email: info@newtechapac.com

Website: www.newtechapac.com

Address: 15/F Enterprise Square Two, 3 Sheung Yuet Road, Kowloon Bay, Kowloon, Hong Kong

